




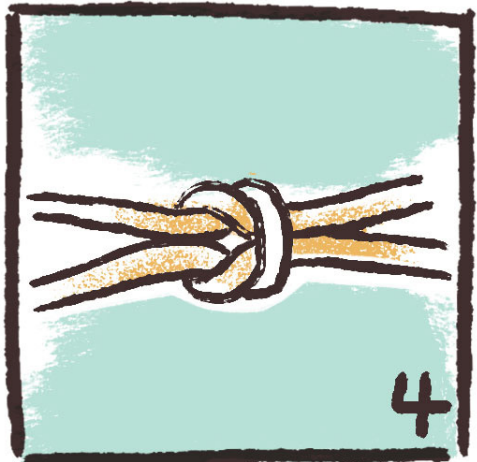
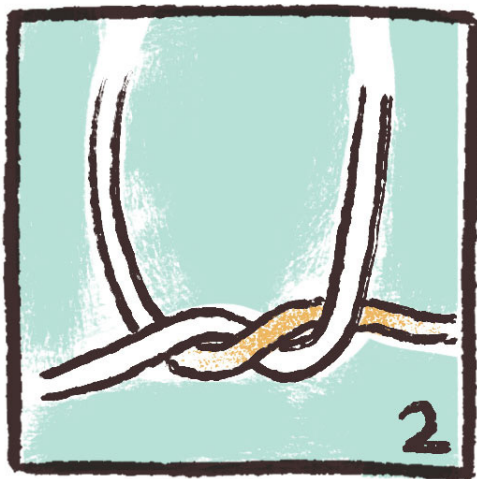
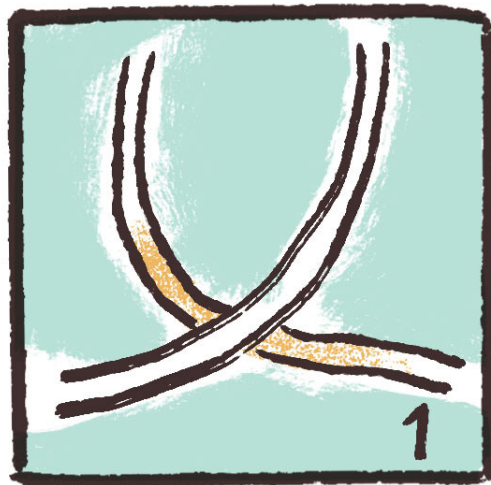
# HOW TO TIE ESSENTIAL KNOTS

# **THE REEF KNOT**

**...AKA THE HERCULES KNOT**

 **RULE TO REMEMBER:  
LEFT OVER RIGHT, RIGHT  
OVER LEFT**

 **COMMON USES:  
JOINING TWO ENDS OF SINGLE  
ROPE TOGETHER**



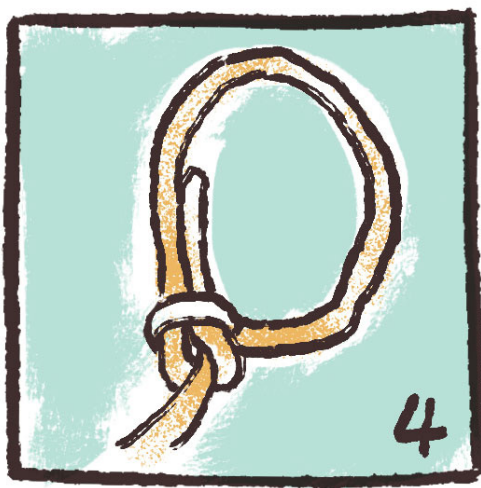
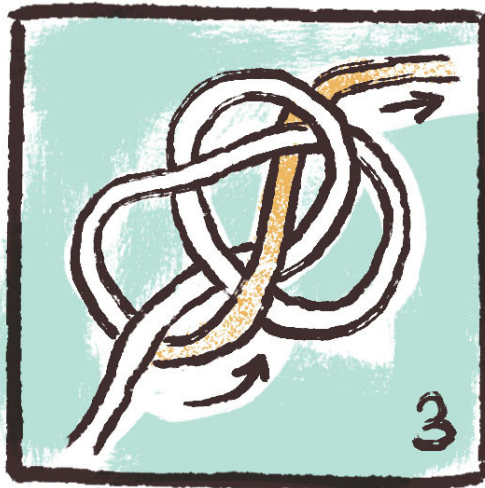
REEF KNOT

# **THE BOWLINE KNOT**

**AKA THE 'KING OF THE KNOTS'  
BECAUSE OF ITS USEFULNESS.**

**→ RULE TO REMEMBER:  
THE RABBIT AND THE RABBIT  
HOLE.**

**→ COMMON USES:  
MAKING A FIXED LOOP AT THE  
END OF A PIECE OF ROPE.**



BOWLINE

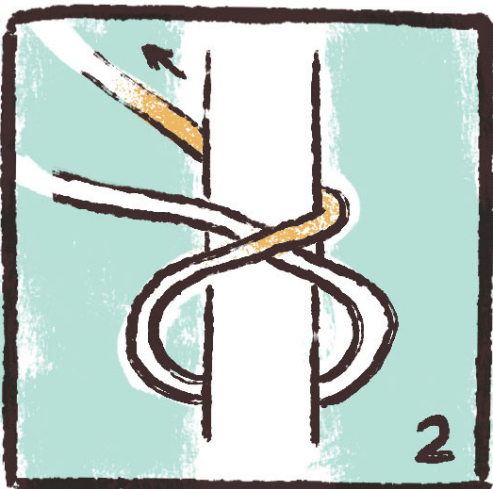
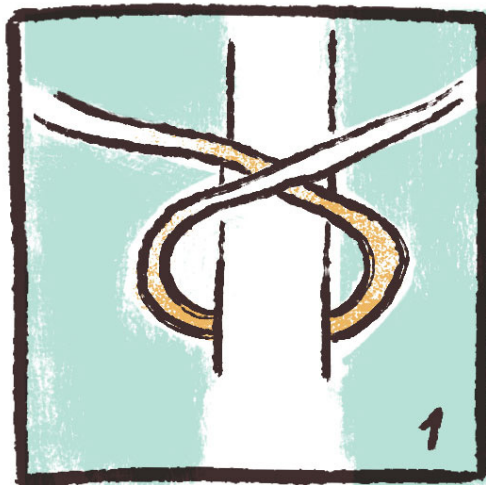
# **THE CLOVE HITCH**

---

**AKA THE DOUBLE HITCH**

→ **RULE TO REMEMBER:  
CROSS OVER YOUR LINE!**

→ **COMMON USES:  
USED FOR WEAK BINDING –  
COWBOYS USED IT TO HITCH  
THEIR HORSES!**



CLOVE HITCH



